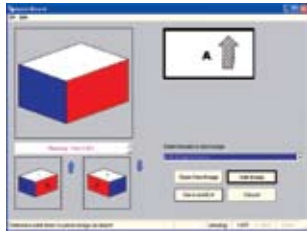


**NEW**

# INTRODUCING THE **NEW CAPE PACK** Version 2.09

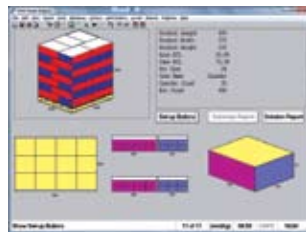
Based on customer feedback we are now launching the latest CAPE PACK Version 2.09 with the following new features.

## **New Quick Wizard** for adding surface graphics



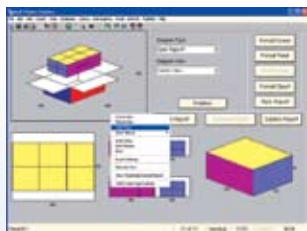
The idea behind this new, simple and easy-to-use imaging program is to transfer scanned images or artwork files to the surfaces of cartons and/or cases.

## **New Casefill program** create a pallet load diagram for a case/tray



Users have requested a feature that allows them to palletise a case to either confirm the quantities per pallet in their Casefill database or to recalculate the number of primary packs per pallet, once they have edited the quantity in a case.

## **Open flaps on a case in Casefill**



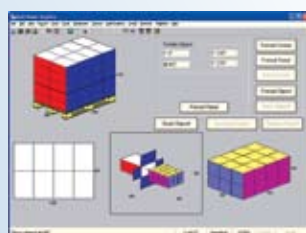
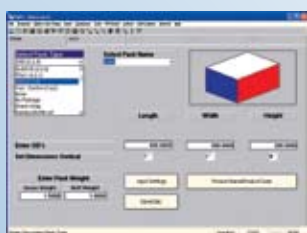
This new feature, to open the case flaps, can be accessed via the right mouse-click feature, at the on-screen graphics.

## **New pallet pattern style**



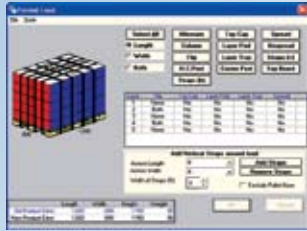
A new Interlocking pallet pattern style, especially for stretch/shrink-wrapping has been added in all program groups.

## **End-loading case style**



We have added an end-loading case style (END) to the Select Pack Type list.

## 4th vertical strap added



In previous versions of CAPE PACK the number of vertical straps allowed on the pallet was restricted to THREE. This has now been increased to FOUR.

## Addition of horizontal strapping



You can now add straps around the pallet load.

## New shrink-wrap pack style (Arrange and Design Groups only)



Following many requests we have modified the "shrink-wrap" pack style in the Select Pack Style list to allow users to specify the number of material thicknesses in the length, width and height of the pack.

## Placement of load within a truck/container



We now offer the option to centre or load from the back of the truck/container.

## Plus more new features including:

- add the cube efficiency figures to the truck solution report
- add truck Area/Cube efficiencies to all exports options (txt, xml, csv)
- add display cases as a package type in the Bundle wizard program
- allow loading of conical/trapezoidal shapes head-2-head or bottom-2-bottom to increase stability
- add export solution report as .csv for all modules

To find out more about **CAPE PACK Version 2.09**

Call Us Now on +44 (0) 20 8752 8610

or email [sales@cape-systemseuro.com](mailto:sales@cape-systemseuro.com)



### CAPE Systems

Suite G.03, The Perfume Factory,  
140 Wales Farm Rd, London, W3 6UG (UK)

+44 (0) 20 8752 8610 [www.capesystems.co.uk](http://www.capesystems.co.uk)